

BACK IN TIME

Story of an old tintype

BY EVELYN BYRNE WILLIAMS WITH JANEEN SATHRE

It doesn't take much to get sidetracked with my collection of old photos and the lack of more information about them. There is one old tintype of the Eagle Hotel built in Eagle Point by Arthur Poole (or Pool) in the mid 1870s. A dear friend, Vieva Saltmarsh, who lived up Little Applegate years ago, had a tintype and other old photos for me to make copies of. I asked Vieva why it was among her family photos and she said her husband, Glen, was related to the Pooles.

At that time I didn't continue with the research, but much later I found more information in Gaynell Krambeal's 1979 book about Eagle Point. He stated the hotel was built by Arthur Poole, who was born on January, 8, 1834, in Bedford County, Pennsylvania. Arthur was a blacksmith by trade, but soon after his arrival in southern Oregon he opened the Eagle Hotel, which became a regular stop on the railroad between Portland and San Francisco.

A book by Barbara Hegne, *Unforgettable Pioneers*, tells about Arthur and a neighbor. "At an earlier time in 1875, Arthur Poole and William Sutherland engaged in what the newspaper termed 'an amazing bloodless

encounter.' These two families resided on Butte Creek and their children had the usual, your kids are beating up my kids, syndrome. The two fathers became involved in a typical over-the-fence argument, carried over from the children. The two fathers began shouting at each other and when that didn't work they started pitching stones back and forth. Arthur Poole had the best advantage being on the outside of Sutherland's yard. He used stones Sutherland had earlier thrown out of his yard to keep it clean. After several minutes of dodging rocks Sutherland saw he was definitely at a disadvantage. He rushed to his house, grabbed his pistol and began shooting wildly at Poole. Arthur's blood ran cold when he saw how serious this was getting. He quickly high-tailed it to notify the law. Sutherland was arrested and exanimated before Justice Tinkham. He was bound over in the sum of \$200, which he furnished."

Getting back to the Eagle Hotel tintype photo, it may be the only one now in existence showing the unfinished building. There are children standing in the upper story opening and some boys sitting on the top of a lumber

stack. Also, I find the slightly visible horse by the fence interesting. I think there must have been a double exposure of the tintype.

I find it so engaging how one photograph can lead to another photograph or story about our local history. And so I can bring us back to the Applegate, Little Applegate to be exact, with the Saltmarshes.

Arthur Poole had a daughter named Ella. It appears that she married a Cameron (well-known family in the Applegate); the research on why she has a second marriage (on November 24, 1881) to Joseph B. Saltmarsh will have to be saved for another day. Now Joseph already had several children by his first wife, who died in 1878 and is buried in the Sterling Cemetery. One of these, a son named Arthur Bird Saltmarsh, marries Ella's (the stepmother) sister, Dora May Poole on April 10, 1886. They had four children: Lee, Dean, Ossie, and Glen. Arthur B. takes up a homestead on the Little Applegate River

near the mouth of Yale Creek. Glen later farms this land where he and his wife Vieva live for many years. (Information on who married who is from John and Marguerite Black's book, *Ruch and the Upper Applegate Valley*.)

The photo of the Saltmarsh log house is one of my favorites. The workmanship with those logs is unbelievable. It is so sad that it was lost to fire in 1929. Of interest is Jason Hartman, who built the house in 1891 or 1892 and the barn in 1895, this being the same Jason Hartman who built the McKee Bridge in 1917.

By the way, McKee Bridge is now in desperate need of funding to cover necessary repairs or we may lose this important part of our local history, too.

Evelyn Byrne Williams
with Janeen Sathre • 541-899-1443

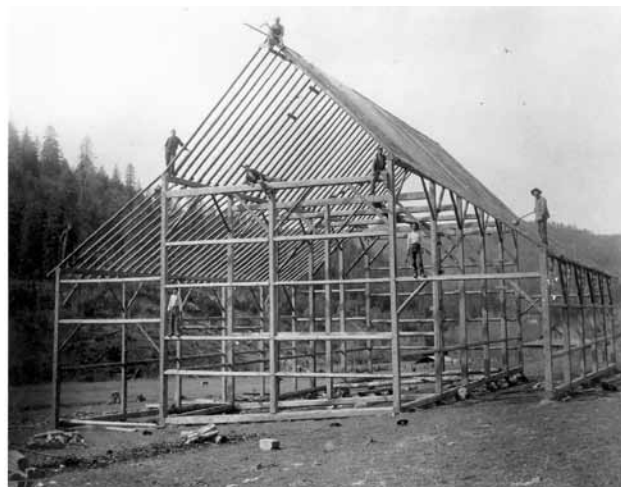
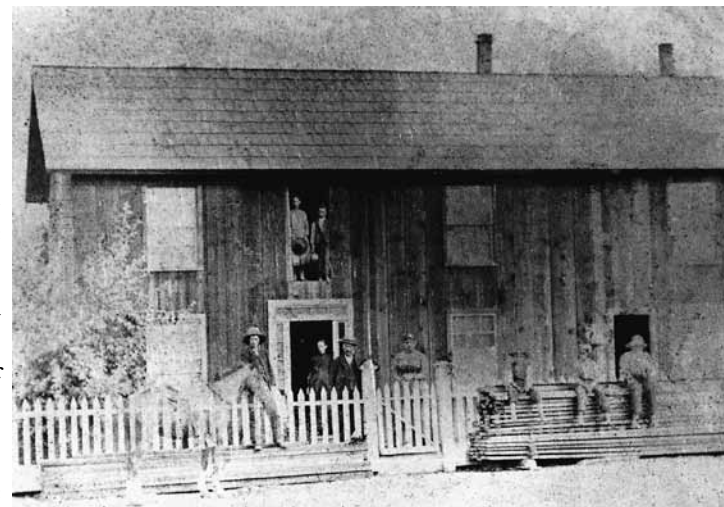


Photo above: Eagle Hotel. Photos below, left to right: Eagle Hotel, barn, Saltmarsh log house